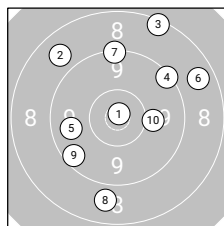
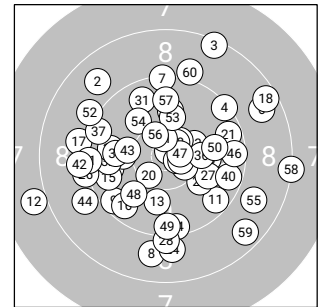


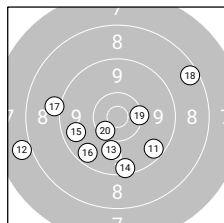
Ergebnis: **550** (576.9)  
 Serien: 88 90 94 94 93 91  
 Zähler: 20 30 10 0 0 0 0 0 0 0  
 Innenezehner: 10  
 Weitestе: 2399 (12.), 2169 (58.), 2080 (3.)  
 beste Teiler: 89.8 (1.), 198.1 (30.), 247.7 (47.)  
 Trefferkreis: 49.67 mm  
 Trefferlage: 0.28 mm links, 0.25 mm tief



**Serie 1: 88** (93.3)

10.8\*↗ 8.8↖ 8.4↗ 9.3↗ 9.7↖  
 8.7↗ 9.3↑ 8.8↓ 9.5↖ 10.0→

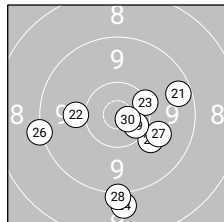
beste Teiler: 89.8 (1.), 729.7 (10.), 971.0 (5.)  
 Trefferkreis: 41.96 mm  
 Trefferlage: 0.93 mm rechts, 3.53 mm hoch



**Serie 2: 90** (94.3)

9.5↘ 8.0↖ 9.9↓ 9.4↓ 9.6↖  
 9.6↖ 9.1↖ 8.5↗ 10.3→ 10.4\*↖

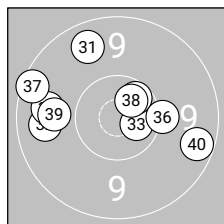
beste Teiler: 438.6 (20.), 521.3 (19.), 801.9 (13.)  
 Trefferkreis: 48.14 mm  
 Trefferlage: 2.60 mm links, 3.81 mm tief



**Serie 3: 94** (98.1)

9.5→ 10.0↖ 10.3↗ 8.9↓ 10.0↘  
 9.2↖ 9.9↘ 9.1↓ 10.5\*↘ 10.7\*↘

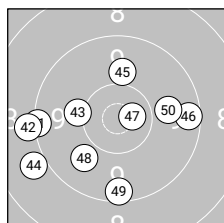
beste Teiler: 198.1 (30.), 375.4 (29.), 536.9 (23.)  
 Trefferkreis: 30.88 mm  
 Trefferlage: 1.39 mm rechts, 3.83 mm tief



**Serie 4: 94** (99.8)

9.6↖ 9.7↖ 10.6\*↘ 10.5\*↗ 9.8↖  
 10.2→ 9.4↖ 10.6\*↗ 9.9↖ 9.5↘

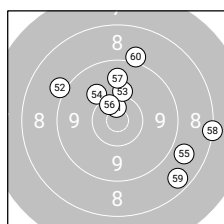
beste Teiler: 272.5 (33.), 298.6 (38.), 363.1 (34.)  
 Trefferkreis: 28.22 mm  
 Trefferlage: 1.97 mm links, 1.53 mm hoch



**Serie 5: 93** (96.8)

9.3↖ 9.1↖ 10.1↖ 9.0↖ 10.0↑  
 9.5→ 10.6\*↗ 9.9↖ 9.4↓ 9.9→

beste Teiler: 247.7 (47.), 666.6 (43.), 780.3 (45.)  
 Trefferkreis: 31.55 mm  
 Trefferlage: 3.03 mm links, 1.75 mm tief



**Serie 6: 91** (94.6)

10.6\*↑ 9.1↖ 10.1↑ 10.0↖ 8.8↘  
 10.4\*↖ 9.7↑ 8.2→ 8.6↘ 9.1↑

beste Teiler: 301.1 (51.), 405.6 (56.), 673.8 (53.)  
 Trefferkreis: 40.52 mm  
 Trefferlage: 3.58 mm rechts, 2.79 mm hoch

