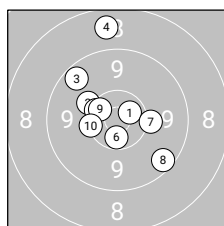
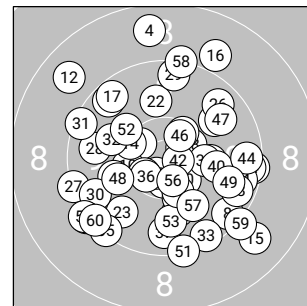


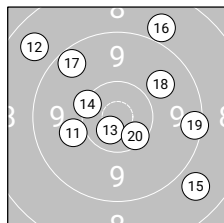
Ergebnis: **563** (588.7)
 Serien: 96 91 92 95 95 94
 Zähler: 27 29 4 0 0 0 0 0 0 0
 Innenezehner: 13
 Weitestе: 1809 (4.), 1764 (12.), 1700 (15.)
 beste Teiler: 193.5 (42.), 243.8 (13.), 279.8 (1.)
 Trefferkreis: 39.20 mm
 Trefferlage: 0.10 mm rechts, 0.72 mm tief



Serie 1: 96 (100.2)

10.6*↗	10.1↖	9.5↖	8.7↑	10.4*↖
10.5*↓	10.1→	9.5↘	10.5*↖	10.3↖

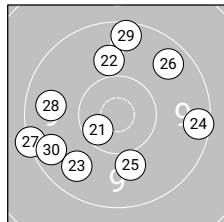
beste Teiler: 279.8 (1.), 340.5 (6.), 395.1 (9.)
 Trefferkreis: 32.55 mm
 Trefferlage: 1.10 mm links, 2.20 mm hoch



Serie 2: 91 (96.5)

10.0↖	8.7↖	10.6*↘	10.3↖	8.8↘
8.9↗	9.5↖	9.9↗	9.4→	10.4*↘

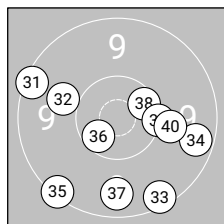
beste Teiler: 243.8 (13.), 420.9 (20.), 529.1 (14.)
 Trefferkreis: 39.15 mm
 Trefferlage: 0.81 mm rechts, 2.14 mm hoch



Serie 3: 92 (97.2)

10.5*↖	9.9↑	9.7↘	9.4→	10.0↓
9.6↗	9.3↖	9.7↖	9.5↑	9.6↖

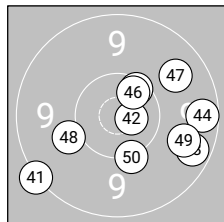
beste Teiler: 364.6 (21.), 768.1 (25.), 813.6 (22.)
 Trefferkreis: 29.81 mm
 Trefferlage: 1.99 mm links, 0.08 mm hoch



Serie 4: 95 (98.3)

9.4↖	10.0↖	9.4↘	9.5→	9.3↘
10.5*↖	9.6↓	10.4*↗	10.2→	10.0→

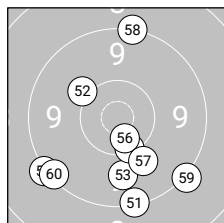
beste Teiler: 367.0 (36.), 415.5 (38.), 565.1 (39.)
 Trefferkreis: 28.79 mm
 Trefferlage: 0.29 mm rechts, 2.94 mm tief



Serie 5: 95 (99.6)

9.2↘	10.7*↗	9.6↘	9.5→	10.4*↗
10.5*↗	9.8↗	10.0↖	9.7→	10.2↓

beste Teiler: 193.5 (42.), 380.8 (46.), 442.7 (45.)
 Trefferkreis: 28.66 mm
 Trefferlage: 2.94 mm rechts, 1.30 mm tief



Serie 6: 94 (96.9)

9.3↓	10.1↖	9.8↓	9.2↖	10.3↓
10.5*↓	10.0↘	9.2↑	9.2↘	9.3↖

beste Teiler: 338.4 (56.), 510.1 (55.), 677.2 (52.)
 Trefferkreis: 32.43 mm
 Trefferlage: 0.31 mm links, 4.52 mm tief

