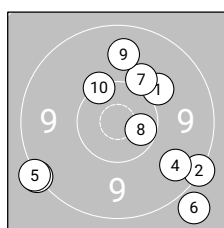
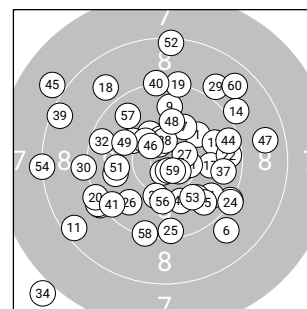


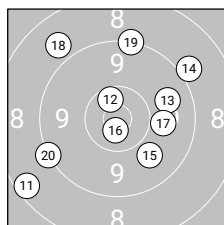
Ergebnis: **550** (576.9)  
 Serien: 93 90 94 91 92 90  
 Zähler: 22 28 8 2 0 0 0 0 0 0  
 Innenezehner: 12  
 Weitestе: 3184 (34.), 2402 (45.), 2172 (54.)  
 beste Teiler: 177.0 (36.), 205.0 (16.), 220.7 (59.)  
 Trefferkreis: 54.98 mm  
 Trefferlage: 0.73 mm links, 0.23 mm hoch



**Serie 1: 93** (96.9)

10.0 ↗	9.3 ↘	9.2 ↙	9.7 ↘	9.2 ↙
8.9 ↘	10.1 ↗	10.5* ↘	9.7 ↑	10.3 ↘

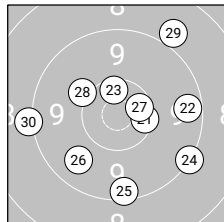
beste Teiler: 349.4 (8.), 549.4 (10.), 692.2 (7.)  
 Trefferkreis: 30.98 mm  
 Trefferlage: 1.82 mm rechts, 1.66 mm tief



**Serie 2: 90** (95.6)

8.5 ↙	10.5* ↖	9.8 →	9.0 ↗	9.9 ↘
10.7* ↓	9.9 →	8.9 ↘	9.2 ↑	9.2 ↙

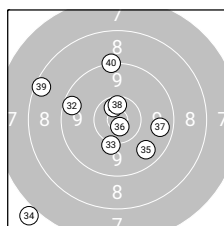
beste Teiler: 205.0 (16.), 363.7 (12.), 812.5 (17.)  
 Trefferkreis: 39.85 mm  
 Trefferlage: 0.26 mm links, 1.46 mm hoch



**Serie 3: 94** (97.4)

10.4* ↘	9.5 →	10.4* ↑	9.2 ↘	9.4 ↓
9.7 ↙	10.5* ↘	10.1 ↙	9.0 ↗	9.2 ↖

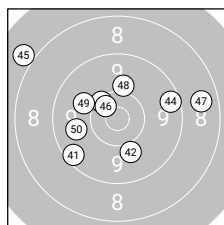
beste Teiler: 373.1 (27.), 403.1 (23.), 447.3 (21.)  
 Trefferkreis: 33.74 mm  
 Trefferlage: 1.41 mm rechts, 0.57 mm tief



**Serie 4: 91** (95.4)

10.6* ↖	9.5 ↖	10.2 ↓	7.0 ↙	9.7 ↘
10.7* ↓	9.6 →	10.5* ↑	8.4 ↙	9.2 ↑

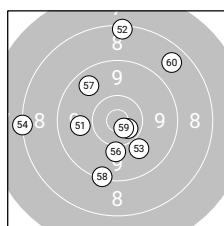
beste Teiler: 177.0 (36.), 312.4 (31.), 361.0 (38.)  
 Trefferkreis: 46.83 mm  
 Trefferlage: 3.75 mm links, 0.85 mm tief



**Serie 5: 92** (96.2)

9.4 ↙	10.0 ↘	10.3 ↘	9.5 →	7.9 ↙
10.5* ↘	8.7 →	10.1 ↑	10.0 ↙	9.8 ↙

beste Teiler: 365.7 (46.), 495.1 (43.), 711.0 (48.)  
 Trefferkreis: 43.42 mm  
 Trefferlage: 1.78 mm links, 2.02 mm hoch



**Serie 6: 90** (95.4)

9.9 ↖	8.3 ↑	9.9 ↘	8.2 ↖	10.6* ↘
10.1 ↓	9.7 ↙	9.3 ↓	10.7* ↘	8.7 ↗

beste Teiler: 220.7 (59.), 300.8 (55.), 712.1 (56.)  
 Trefferkreis: 41.47 mm  
 Trefferlage: 1.84 mm links, 1.02 mm hoch

