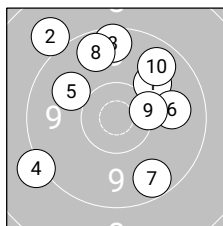
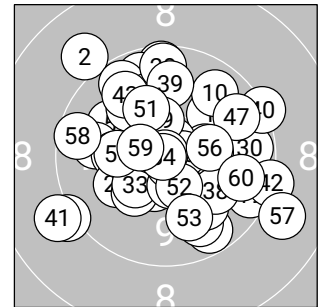


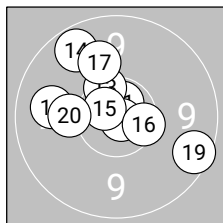
Ergebnis: **606.2 (578)**  
 Serien: 97.3 102.6 101.3 102.2 101.8 101.0  
 Zähler: 38 22 0 0 0 0 0 0 0 0  
 Innenezehner: 23  
 Weitestе: 1570 (57.), 1540 (2.), 1495 (41.)  
 beste Teiler: 35.1 (50.), 35.4 (54.), 73.7 (12.)  
 Trefferkreis: 36.52 mm  
 Trefferlage: 0.14 mm rechts, 0.70 mm hoch



**Serie 1: 97.3 (93)**

10.0 ↗	9.0 ↘	9.6 ↑	9.2 ↙	10.0 ↘
9.9 →	9.7 ↘	9.7 ↑	10.4* →	9.8 ↗

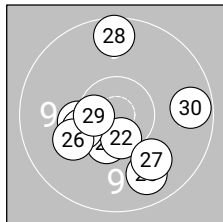
beste Teiler: 480.6 (9.), 731.3 (1.), 772.2 (5.)  
 Trefferkreis: 31.23 mm  
 Trefferlage: 0.25 mm links, 3.49 mm hoch



**Serie 2: 102.6 (97)**

10.7* ↑	10.9* ↘	10.4* ↗	9.7 ↘	10.7* ↘
10.5* →	10.0 ↑	9.9 ←	9.6 ↘	10.2 ←

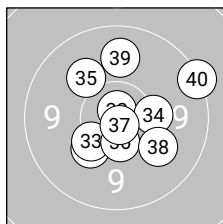
beste Teiler: 73.7 (12.), 187.2 (15.), 200.7 (11.)  
 Trefferkreis: 26.01 mm  
 Trefferlage: 1.00 mm links, 1.78 mm hoch



**Serie 3: 101.3 (97)**

10.4* ↘	10.5* ↘	10.3 ←	10.3* ←	9.8 ↘
10.1 ←	10.0 ↘	9.6 ↑	10.6* ←	9.7 →

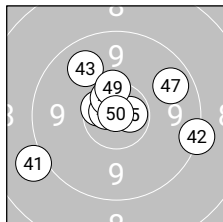
beste Teiler: 307.1 (29.), 324.9 (22.), 407.9 (21.)  
 Trefferkreis: 24.92 mm  
 Trefferlage: 0.09 mm links, 1.58 mm tief



**Serie 4: 102.2 (98)**

10.2 ↙	10.8* ↑	10.3* ↙	10.3 →	10.1 ↘
10.5* ↘	10.8* ↘	10.0 ↘	9.9 ↑	9.3 ↗

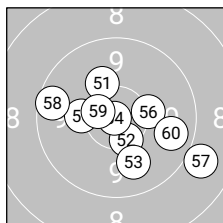
beste Teiler: 109.1 (32.), 113.8 (37.), 356.1 (36.)  
 Trefferkreis: 23.91 mm  
 Trefferlage: 1.26 mm rechts, 0.48 mm hoch



**Serie 5: 101.8 (96)**

9.1 ←	9.3 →	9.8 ↘	10.6* ↙	10.7* →
10.7* ↙	9.7 →	10.6* ↗	10.4* ↑	10.9* ↗

beste Teiler: 35.1 (50.), 168.4 (46.), 209.1 (45.)  
 Trefferkreis: 31.51 mm  
 Trefferlage: 0.10 mm links, 1.07 mm hoch



**Serie 6: 101.0 (97)**

10.2 ↘	10.5* ↘	10.0 ↘	10.9* ←	10.2 ←
10.3 →	9.0 ↘	9.6 ←	10.5* ←	9.8 →

beste Teiler: 35.4 (54.), 321.2 (59.), 398.9 (52.)  
 Trefferkreis: 31.96 mm  
 Trefferlage: 1.05 mm rechts, 1.05 mm tief

